

*Star Valley Middle School
999 Warrior Way
Afton, Wyoming 83110
Phone (307) 885-5208 • FAX (307) 885-0472
Steven Burch, Principal
Wyndy McGinley, Assistant Principal*

*****UPDATED DROP OFF & PICK-UP PROCEDURE*****

Morning drop-off and afternoon pick-up HAVE CHANGED. Due to the high school students being picked up first and middle school students at the end of the pick-up, we have adjusted these procedures. Please read the changes below. The safety of your child(ren) is our utmost concern and we appreciate your understanding as we make adjustments to our procedures to ensure this safety. As always, the first couple of weeks are the most time consuming and we ask that you please be patient with the process.

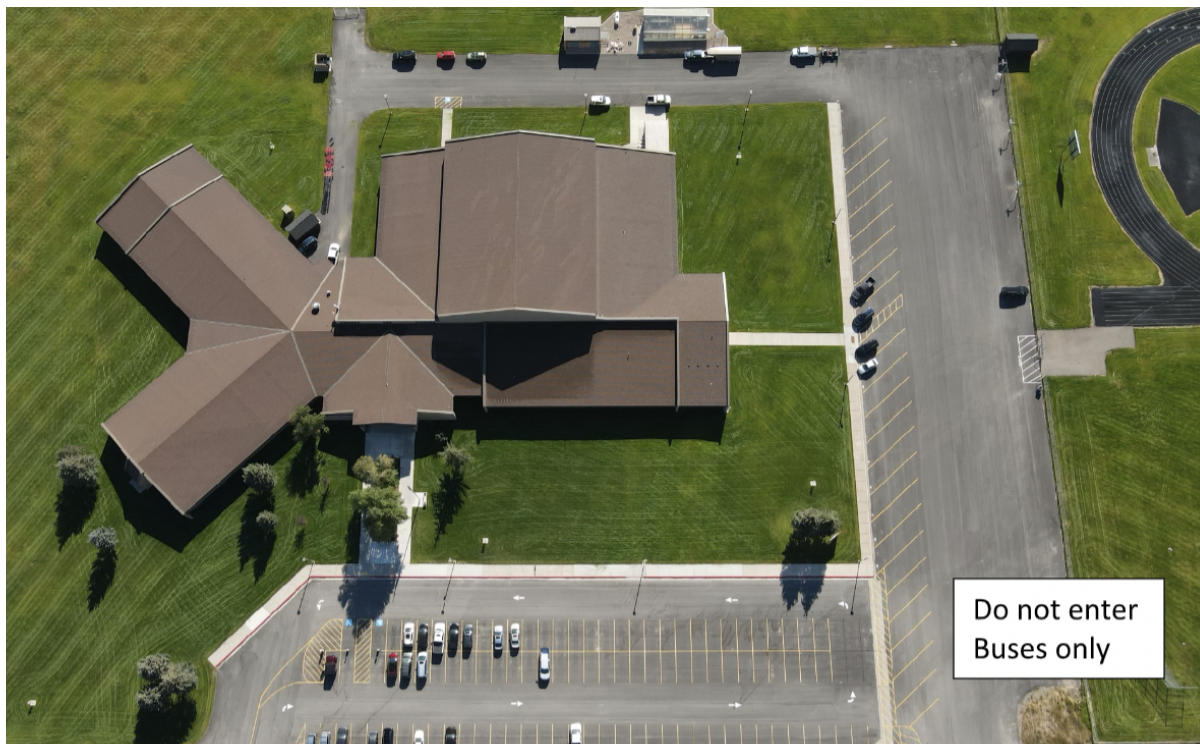
Morning Drop-off:

- ALL Students need to be dropped off on the West side of the building. Parents need to enter the NORTH ENTRANCE and follow the arrows. Do not drop students off on the South side of the building. This is the school bus zone. Parents will exit the NORTH ENTRANCE.

Afterschool Pick-up:

- Same procedure as the morning. This is especially important during after school game days.

Drone Picture



Thank you in advance for all your help and cooperation in ensuring the safety of your child! Should you have any questions regarding the procedure, please feel free to contact the front office.

Thank you,

Steve Burch and Wyndy McGinley

“Striving for Social and Academic Excellence”